

CHROMIUM CARBIDE (CrC) OVERLAY PIPE (CCO PIPE)

UP-Pipe

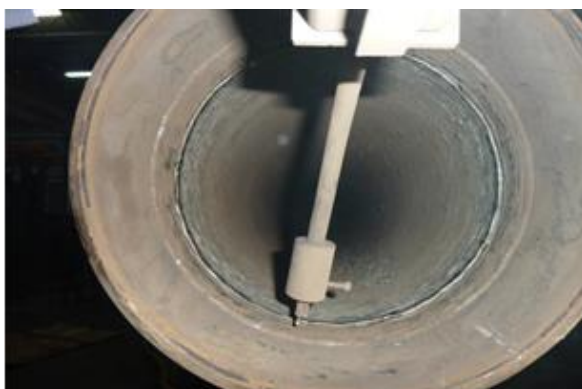
- **The Advantage of Chromium Carbide Inner-Welded Pipe**

UP Chromium Carbide Overlay Pipe provides excellent resistance to severe abrasion, erosion, and impact in many practical applications. UP CCO Pipe is designed to virtually extend service life of workpiece which suffer wear during conveyance system. UP CCO Pipe can be customized and is easy to install.



- **Characteristics of Chromium Carbide Inner-Welded Pipe**

UP has developed an inner welding technique that the defects such as porosity and lack of fusion can be avoided.



← the leading torch angle and torch position relative to the bottom of the pipe.

The photo on the right below indicating a uniform crack pattern representing uniform residual stress distribution and maximum adherence.

The left photo shows the overlay surface.



- **Real Case**



- UP pipe is designed for conveying bulk materials, dust and slurry.
- The various dimension is available to meet all your needs.
- Standard pipes are made from SCH40 seamless pipe.
- Inner Diameter – 76 mm Min.
- Length – Customized (segmented if length over 10 times of diameter)
- Overlay Thickness – 4mm to 12mm
- Overlay Hardness – 55 HRC Min.
- Fittings like flanges, hang rings, and so on are customized.

COPYRIGHT UP SCIENTECH MATERIALS CORP.